

Monthly Weather Summary in Thailand June 2019

In June 2019, the southwest monsoon which prevailed over the Andaman Sea, Thailand and the Gulf of Thailand was periodically strengthened. In addition, the monsoon trough that lay across the upper northern and upper northeastern parts had shifted to lie over Myanmar, upper northern, Laos and upper Vietnam during mid-month. It weakened and disappeared during late month. Besides, the low pressure cell covered upper Vietnam for few days. These conditions caused intermittent rainfall in upper Thailand with slightly to moderate rain which inducing lower than normal rainfall especially in the northern and northeastern parts where the total rainfall amount was 30% and 41% below normal, respectively. In southern part, with the prevailing of the southwest monsoon and the covering of the low pressure cell over the southern part, abundant rainfall was observed almost the whole month especially along the west coast.

1 - 10 June: The monsoon trough lay across the northern, Laos and upper Vietnam toward the low pressure cell over the Gulf of Tonkin during early period and the southeasterly wind prevailed over lower northeastern, eastern and the Gulf of Thailand during the first half of the period. In addition, the prevailing of the southwest monsoon over the Andaman and Thailand throughout the period caused rain in upper Thailand. In northern region, there was isolated to scattered rain with heavy rainfall in some areas except for fairly widespread rain with isolated heavy to very heavy rainfall on June 1, 2 and 5. In northeastern region, there was isolated rain with heavy in some areas except for scattered to fairly widespread rain with isolated heavy to very heavy rainfall on June 1, 2 and 5. In the central and eastern regions, rainfall was mainly observed in the middle and the end of the period with fairly widespread rain and heavy to very heavy rainfall in some areas. The maximum daily rainfall in upper Thailand was 1296.0 millimeter at Bo Kluea in Nan province on June 5. Thunderstorm and gusty wind was reported at Phichit province on June 4, at Si Sa Ket province on June 5 and 7, at Chai Nat province on June 3. There was flash flooding and mud slide at Nan province on June 5 and flooding at Pathum Thani province on June 6 and at Bangkok Metropolis on June 7. In southern part, there was an influence of the southwest monsoon prevailing over the Andaman Sea and southern part accompanied with the low pressure cell which covered lower southern part and Malaysia during June 5 and 6 and moved to cover the middle southern part on June 7 before covering the southern part (west coast) and the Andaman Sea on the following day. These resulted in abundant rainfall almost the period especially during the second half of the period that obtained fairly widespread rain with heavy to very heavy rainfall in some areas in particularly along the west coast. The highest daily rainfall in southern region was 221.0 millimeter at Koh Pha-ngan in Surat Thani province on June 3 with flooding at Phang-nga province on June 8.

11 - 20 June: The southwest monsoon which prevailed over the Andaman Sea and Thailand was strengthened during the second half of the period. Plus, the monsoon trough lay over the upper northern and upper northeastern parts during early period and moved to lie over Myanmar, upper northern, Laos and upper Vietnam during late period coupled with the covering of the low pressure cell over upper Vietnam for few days. These caused abundant rain almost the period especially in the northern and northeastern parts that received scatter to

fairly widespread rain during the beginning and the middle of the period and then decreasing in rainfall. Central and eastern parts obtained isolated to scattered rain almost the period except for fairly widespread rain with heavy to very heavy rainfall in some areas on June 11, 16 and 17. The maximum daily rainfall in upper Thailand was 171.8 millimeter at Amphoe Muang in Nong Khai province on June 16. There were gusty wind at Trat province on June 18 and boat sank at Ko Kut in Trat province on the same day. In southern part, the distribution and amount of rainfall was mainly observed along the west coast. The heaviest daily rainfall in southern region was 65.8 millimeter at Suk Samran in Ranong province on June 17. Also, there was the occurrence of gusty wind at Phatthalung, Songkhla, Pattani, Narathiwat and Satun provinces on June 18.

21 - 30 June: The southwest monsoon which prevailed over the Andaman Sea, Thailand and the Gulf of Thailand was strengthened during the second half of the period. Also, the low pressure cell covered the coastal of Cambodia on June 23 and persisted over upper Vietnam during the second half of the period. These caused rainfall in upper Thailand during the middle and the end of the period especially in the central and eastern parts that obtained fairly widespread rain with heavy to very heavy rainfall in some areas while the northern and northeastern parts received scattered rain with isolated heavy to very heavy rainfall. The maximum daily rainfall in upper Thailand was 136.3 millimeter at Wat Bang Bon School, Khet Bang Bon in Bangkok Metropolis on June 24. In southern part, there was scattered to fairly widespread rain almost the period with isolated heavy rainfall along the east coast while fairly widespread rain with isolated heavy to very heavy rainfall was found along the west coast during the first half of the period. After that, the rainfall decreased. The maximum daily rainfall in southern Thailand was 241.6 millimeter at Ko Lanta in Krabi province on June 23 with flooding at Phang-nga province on the same day.

Note : Rainfall, temperatures and natural disasters available in this report are preliminary data.

Climatological Center
Meteorological Development Bureau
Thai Meteorological Department

Monthly Current Report
Rainfall and Accumulative Rainfall
June 2019

Northern Thailand

Station	Temperature (°c)		Rainfall (mm)		Accumulative rainfall (mm) Since 1 January	
	Mean	Above or below normal	Actual	Above or below normal	Actual	Above or below normal
Chiang Rai	29.6	2.4	60.5	-117.9	250.5	-288.7
Mae Hong Son	29.0	1.4	67.4	-123.1	352.6	-104.8
Phayao	29.3	1.7	32.5	-70.3	180.9	-235.9
Chiang Mai	29.7	2.1	43.4	-81.1	210.8	-163.9
Tha Wang Pha	27.5	0.3	65.5	152.9	388.7	388.9
Nan	30.0	1.7	137.4	3.6	457.8	-1.9
Lamphun	29.5	1.3	57.3	-66.9	220.0	-124.3
Lampang	29.6	1.3	48.9	-68.6	296.2	-82.0
Mae Sariang	27.7	0.9	143.3	-39.7	283.2	-129.0
Phrae	29.7	1.5	47.0	-91.8	348.2	-93.0
Uttaradit	29.9	1.0	139.7	-66.7	240.5	-310.3
Bhumibol Dam	29.4	0.9	41.9	-64.6	211.4	-189.4
Tak	29.5	1.1	108.1	-19.7	317.5	-65.7
Mae Sot	27.7	1.4	264.4	9.0	408.8	-91.0
Umphang	26.3	1.3	205.3	17.8	426.1	-121.5
Phitsanulok	30.0	1.0	144.3	-21.4	350.4	-86.0
Lom Sak	29.8	1.6	179.1	42.9	389.5	-26.4
Phetchabun	30.3	2.1	75.8	-85.9	364.8	-105.3
Wichian Buri	30.3	1.2	151.8	7.5	369.2	-94.0
Kamphaeng Phet	29.4	1.0	173.8	8.7	416.2	-49.3
Over the area	29.2	1.3	109.4	-46.8 -30%	324.2	-124.2 -28%

Northeastern Thailand

Station	Temperature (°c)		Rainfall (mm)		Accumulative rainfall (mm) Since 1 January	
	Mean	Above or below normal	Actual	Above or below normal	Actual	Above or below normal
Nong Khai	30.1	1.9	304.1	41.8	657.6	21.6
Loei	29.6	1.8	74.1	-85.5	222.1	-301.1
Udon Thani	29.8	1.2	276.6	47.6	450.1	-129.5
Nakhon Phanom	29.4	1.6	440.3	30.8	787.2	-74.6
Sakon Nakhon	29.6	1.5	102.1	-164.7	405.2	-274.0
Mukdahan	30.2	1.9	110.4	-123.0	356.3	-212.9
Khon Kaen	30.3	1.7	63.9	-97.7	396.7	-90.7
Kosum Phisai	30.7	1.7	52.2	-125.6	346.9	-151.7
Roi Et	30.5	1.8	30.4	-193.1	303.4	-246.1
Chaiyaphum	30.2	1.7	61.3	-76.3	334.1	-106.4
Ubon Ratchathani	30.4	2.0	102.0	-138.2	449.2	-134.3
Tha Tum	29.7	0.6	37.4	-168.7	347.4	-183.1
Surin	29.8	1.5	101.9	-102.8	333.0	-207.5
Nakhon Ratchasima	30.4	1.3	54.0	-50.5	204.5	-187.7
Chok Chai	30.0	1.3	57.6	-49.7	143.6	-250.3
Nang Rong	29.8	1.2	50.0	-79.7	293.5	-156.6
Over the area	30.0	1.5	119.9	-83.5 -41%	376.9	-167.9 -31%

- NOTES :
- 1) Mean temperature is the average of daily dry-bulb temperature
 - 2) "T" is trace, rainfall amount less than 0.1 mm.
 - 3) "blank" is incomplete data.
 - 4) Temperature and rainfall are preliminary data.

Monthly Current Report
Rainfall and Accumulative Rainfall
June 2019

Central Thailand

Station	Temperature (°c)		Rainfall (mm)		Accumulative rainfall (mm) Since 1 January	
	Mean	Above or below normal	Actual	Above or below normal	Actual	Above or below normal
Nakhon Sawan	30.1	0.7	138.0	0.7	450.6	49.6
Bua Chum	30.8	1.9	49.2	-67.1	202.3	-193.2
Lop Buri	30.2	1.2	101.1	-22.9	200.6	-196.7
Suphan Buri	30.2	1.0	62.6	-31.8	221.6	-65.7
Thong Pha Phum	28.0	0.9	201.5	-76.8	362.9	-312.9
Kanchanaburi	29.6	0.6	152.0	65.6	279.2	-81.5
Bangkok Airport	29.9	0.5	238.5	70.4	456.5	-68.5
Bangkok Metropolis	30.1	0.6	151.3	-5.8	289.7	-281.9
Over the area	29.9	1.0	136.8	-8.4 -6%	307.9	-143.9 -32%

Eastern Thailand

Station	Temperature (°c)		Rainfall (mm)		Accumulative rainfall (mm) Since 1 January	
	Mean	Above or below normal	Actual	Above or below normal	Actual	Above or below normal
Prachin Buri	30.1	1.2	198.4	-25.1	521.8	-124.1
Kabin Buri	29.0	0.6	171.3	-26.6	401.1	-173.3
Aranyaprathet	29.7	1.1	230.4	66.8	435.8	-67.2
Chon Buri	30.4	0.8	143.0	-4.7	409.6	-59.2
Ko Sichang	29.9	0.6	111.5	-13.9	374.7	-38.6
Pattaya	29.4	0.5	116.0	-3.0	450.0	35.5
Sattahip	29.7	0.3	220.8	90.7	476.2	-8.5
Rayong	29.9	0.5	94.5	-70.6	541.6	-31.2
Chanthaburi	28.6	0.7	506.6	-6.0	997.0	-160.3
Khlong Yai	27.8	0.4	1011.3	181.4	1874.8	194.3
Over the area	29.5	0.7	280.4	18.9 7%	648.3	-43.3 -6%

- NOTES :
- 1) Mean temperature is the average of daily dry-bulb temperature
 - 2) "T" is trace, rainfall amount less than 0.1 mm.
 - 3) "blank" is incomplete data.
 - 4) Temperature and rainfall are preliminary data.

Monthly Current Report
Rainfall and Accumulative Rainfall
June 2019

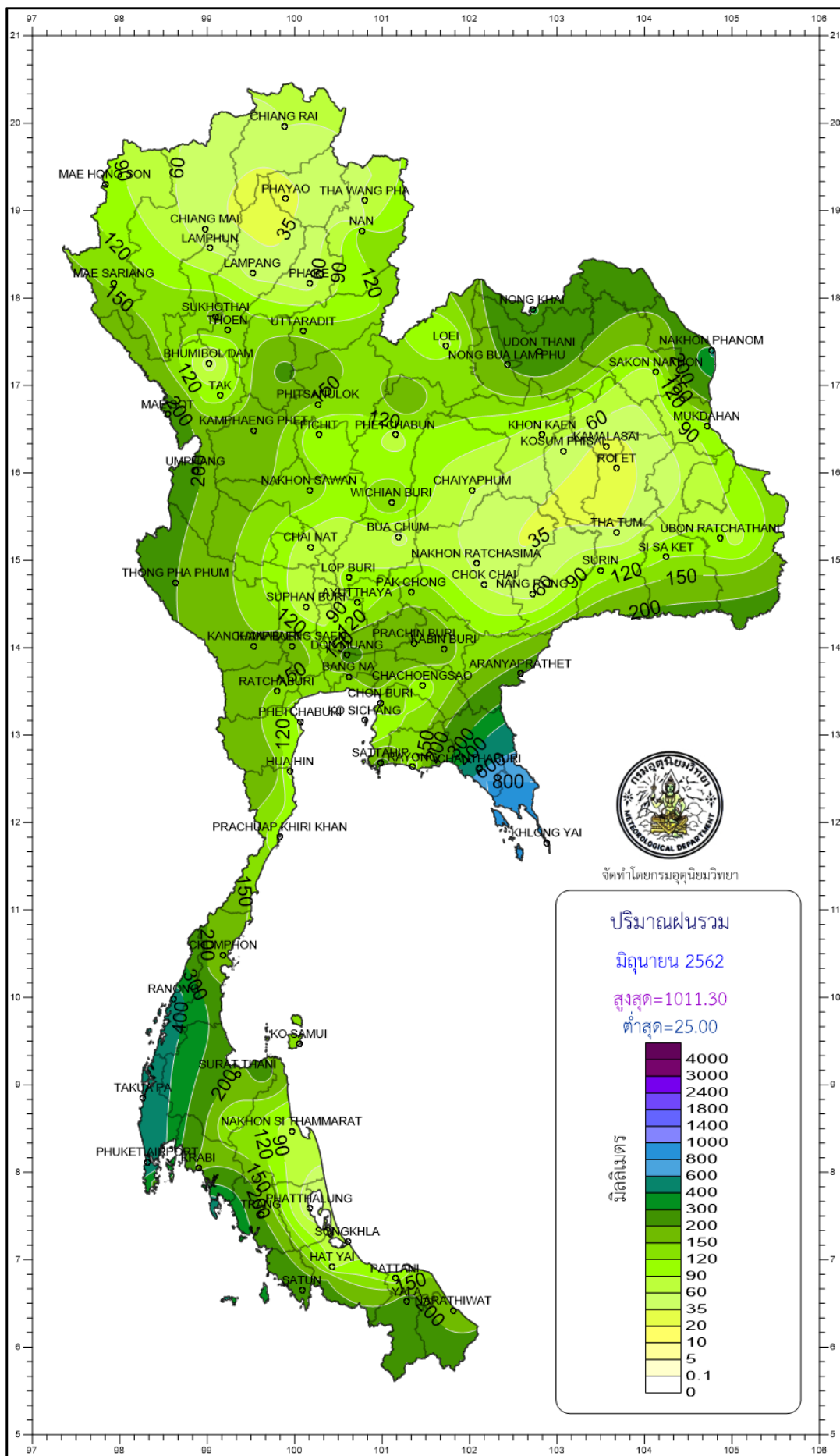
Southern Thailand, east coast

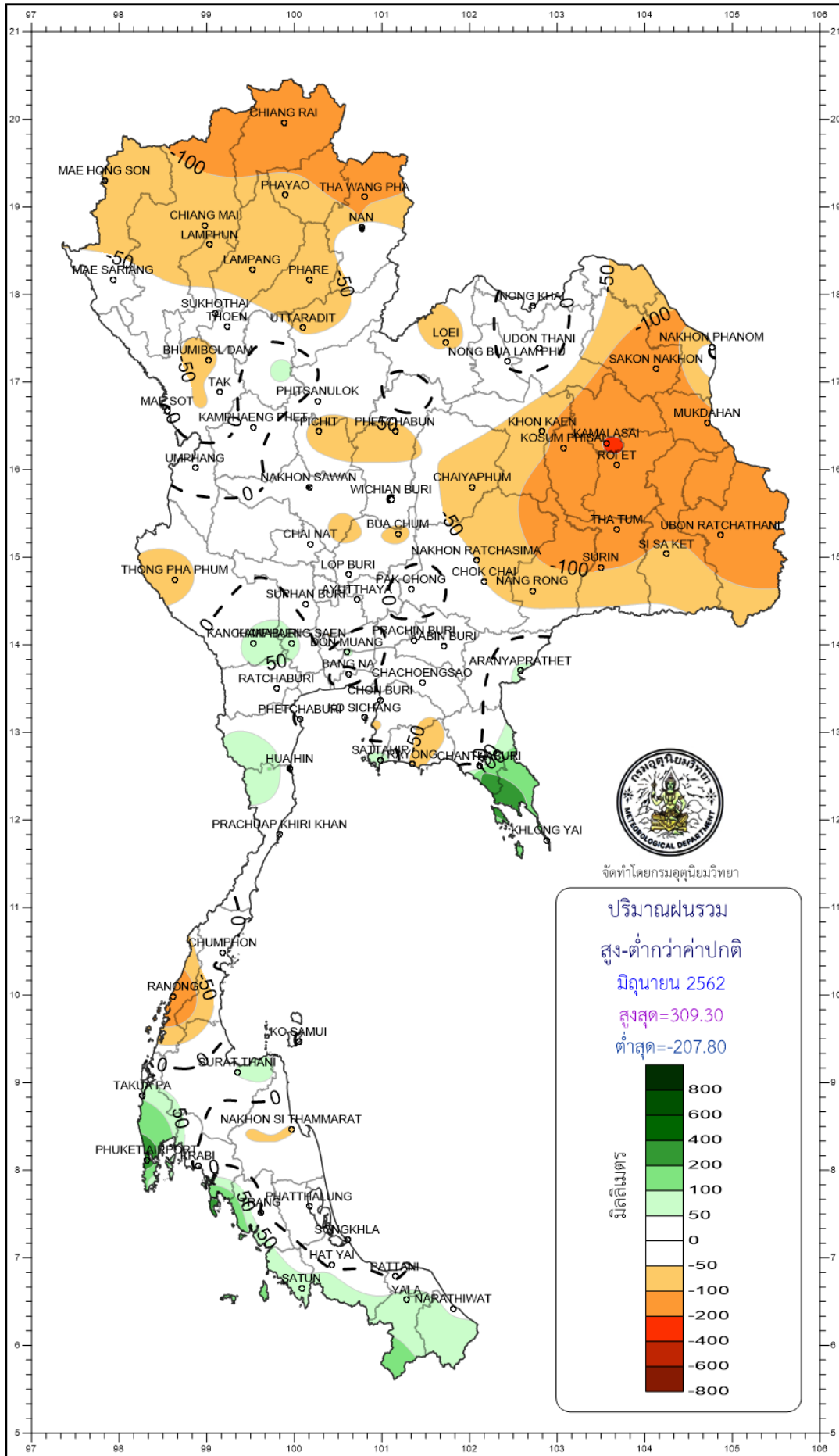
Station	Temperature (°c)		Rainfall (mm)		Accumulative rainfall (mm) Since 1 January	
	Mean	Above or below normal	Actual	Above or below normal	Actual	Above or below normal
Phetchaburi	29.8	0.8	85.6	-6.4	219.3	-57.5
Hua Hin	29.6	0.6	71.7	-7.2	205.8	-109.4
Prachuap Khiri Khan	28.9	0.5	103.3	17.1	283.0	-103.6
Chumphon	28.2	0.6	159.5	-7.7	636.3	-8.8
Surat Thani	28.1	0.5	178.9	53.9	469.7	20.2
Ko Samui	29.3	0.6	118.5	-5.6	465.6	-118.9
Nakhon Si Thammarat	29.1	0.9	62.9	-54.4	742.6	41.2
Songkhla	29.1	0.5	83.2	-16.7	473.9	-3.8
Hat Yai Airport	28.0	0.3	83.6	-35.7	515.6	-23.3
Pattani Airport	28.4	0.5	99.9	-9.5	554.5	100.7
Narathiwat	28.2	0.3	165.0	41.8	649.8	39.0
Over the area	28.8	0.6	110.2	-2.8 -2%	474.2	-20.5 -4%

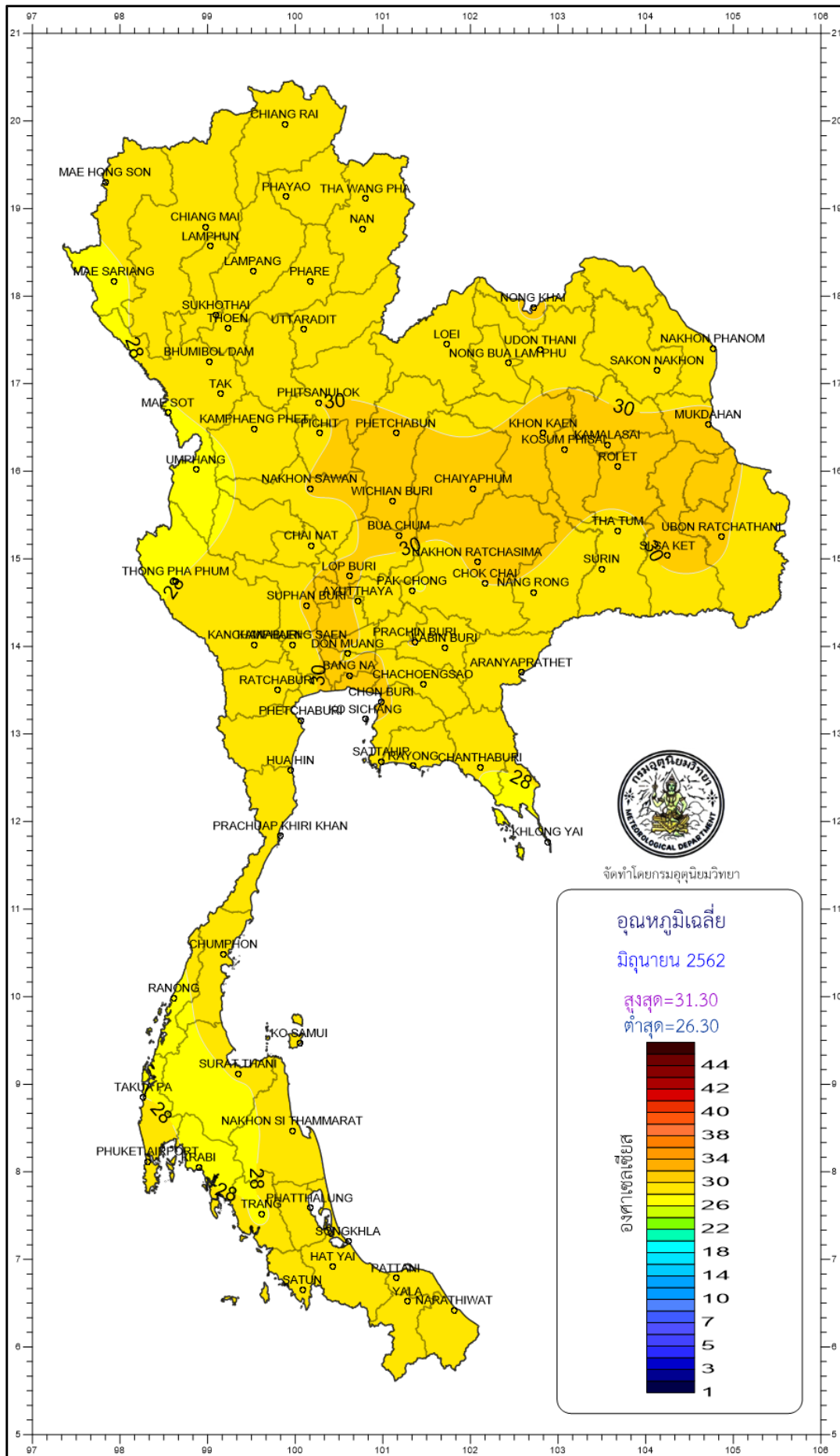
Southern Thailand, west coast

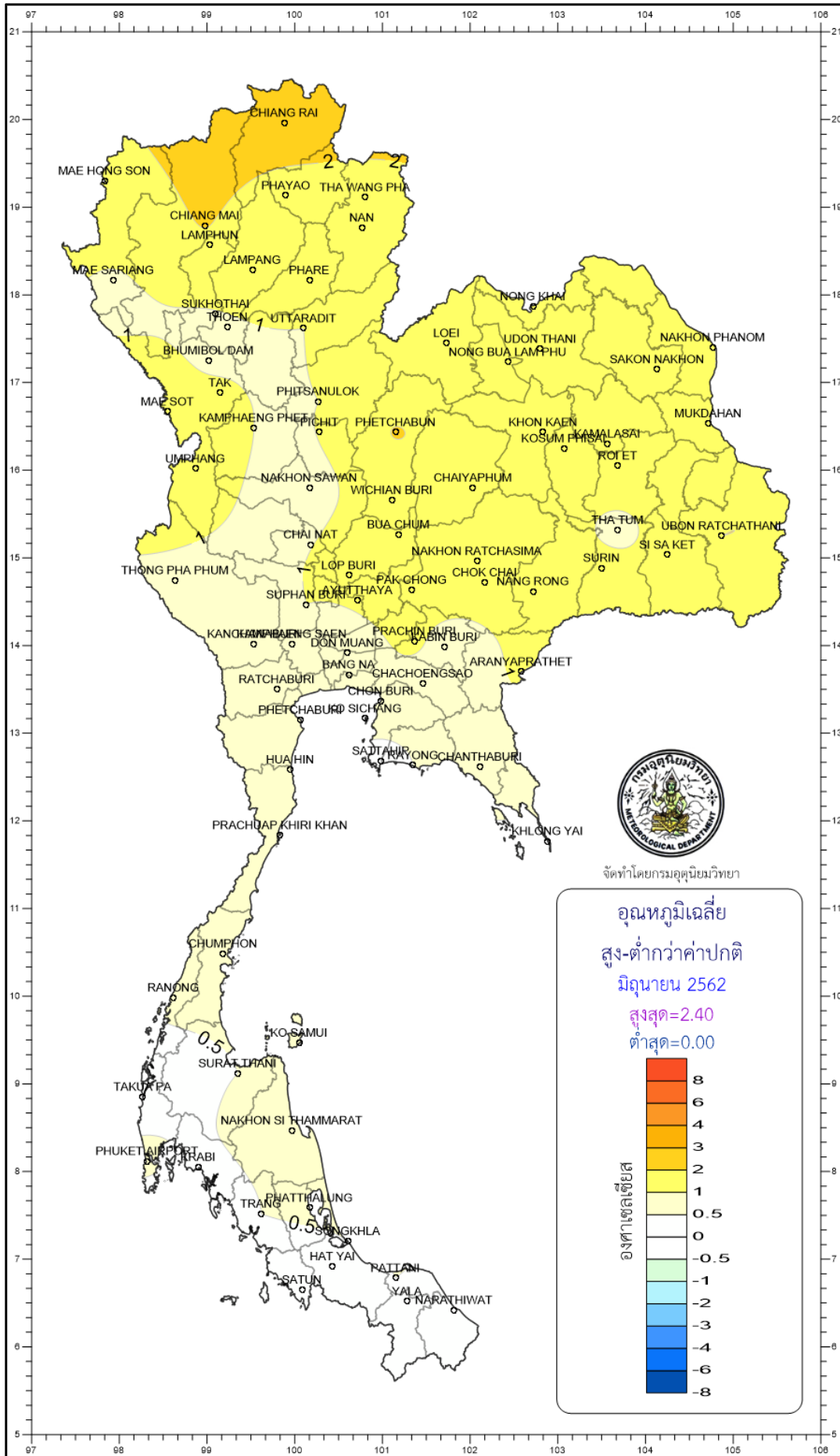
Station	Temperature (°c)		Rainfall (mm)		Accumulative rainfall (mm) Since 1 January	
	Mean	Above or below normal	Actual	Above or below normal	Actual	Above or below normal
Ranong	27.9	0.6	456.1	-193.3	1346.5	-43.3
Takua Pa	28.0	0.2	510.6	86.4	1389.1	122.3
Phuket	29.0	0.4	267.0	53.7	616.1	-127.3
Phuket Airport	29.0	0.7	551.6	294.8	1068.4	212.4
Ko Lanta	28.5	0.0	567.8	309.3	881.0	163.3
Trang Airport	27.9	0.5	199.2	-1.9	746.5	51.5
Satun	28.0	0.2	250.4	66.9	816.9	5.1
Over the area	28.3	0.3	400.4	88.0 28%	980.6	54.8 6%

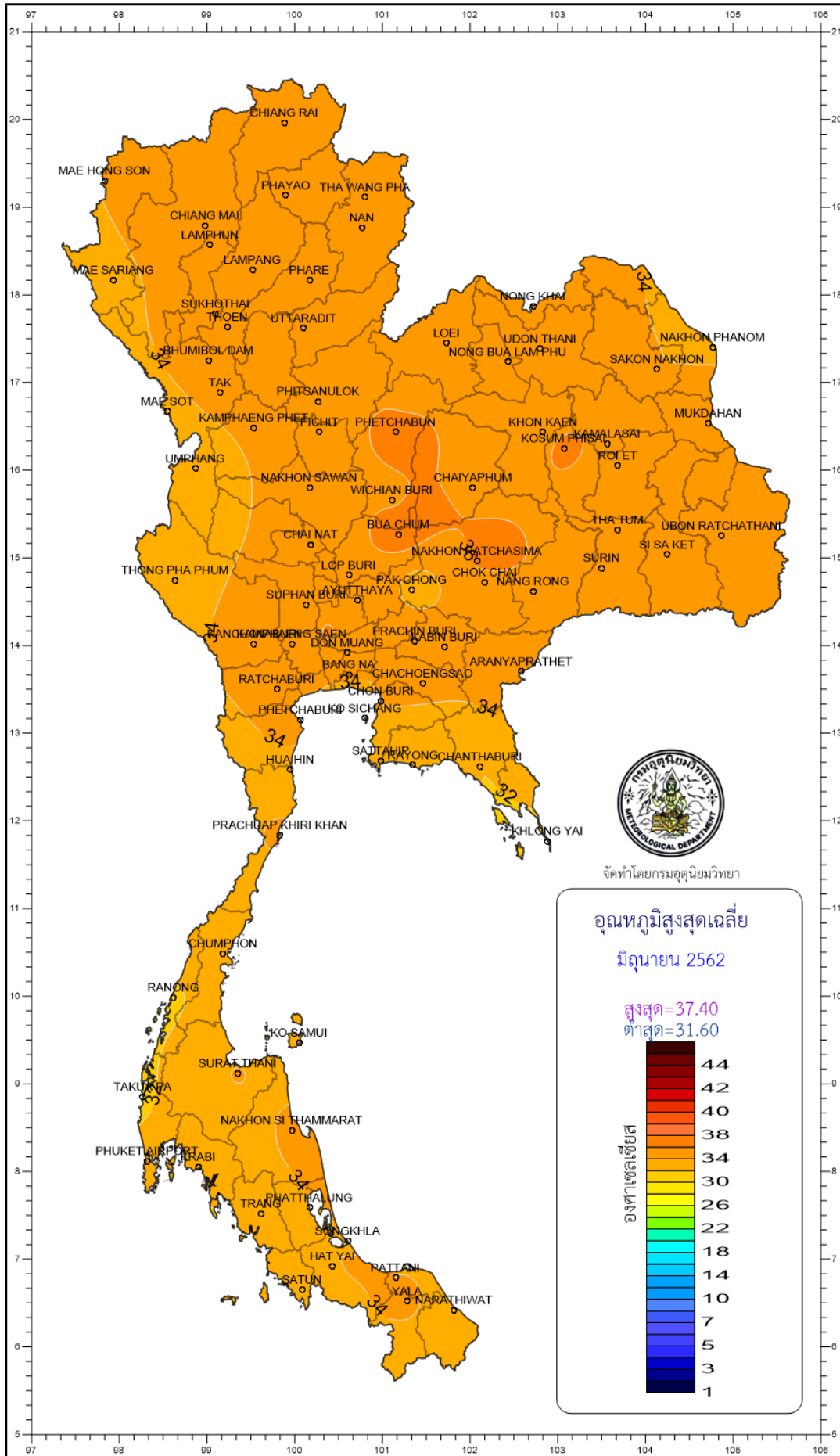
- NOTES :
- 1) Mean temperature is the average of daily dry-bulb temperature
 - 2) "T" is trace, rainfall amount less than 0.1 mm.
 - 3) "blank" is incomplete data.
 - 4) Temperature and rainfall are preliminary data.











จัดทำโดยกรมอุตุนิยมวิทยา

